

CERTIFICATE OF LOCATION OF GOVERNMENT CORNER

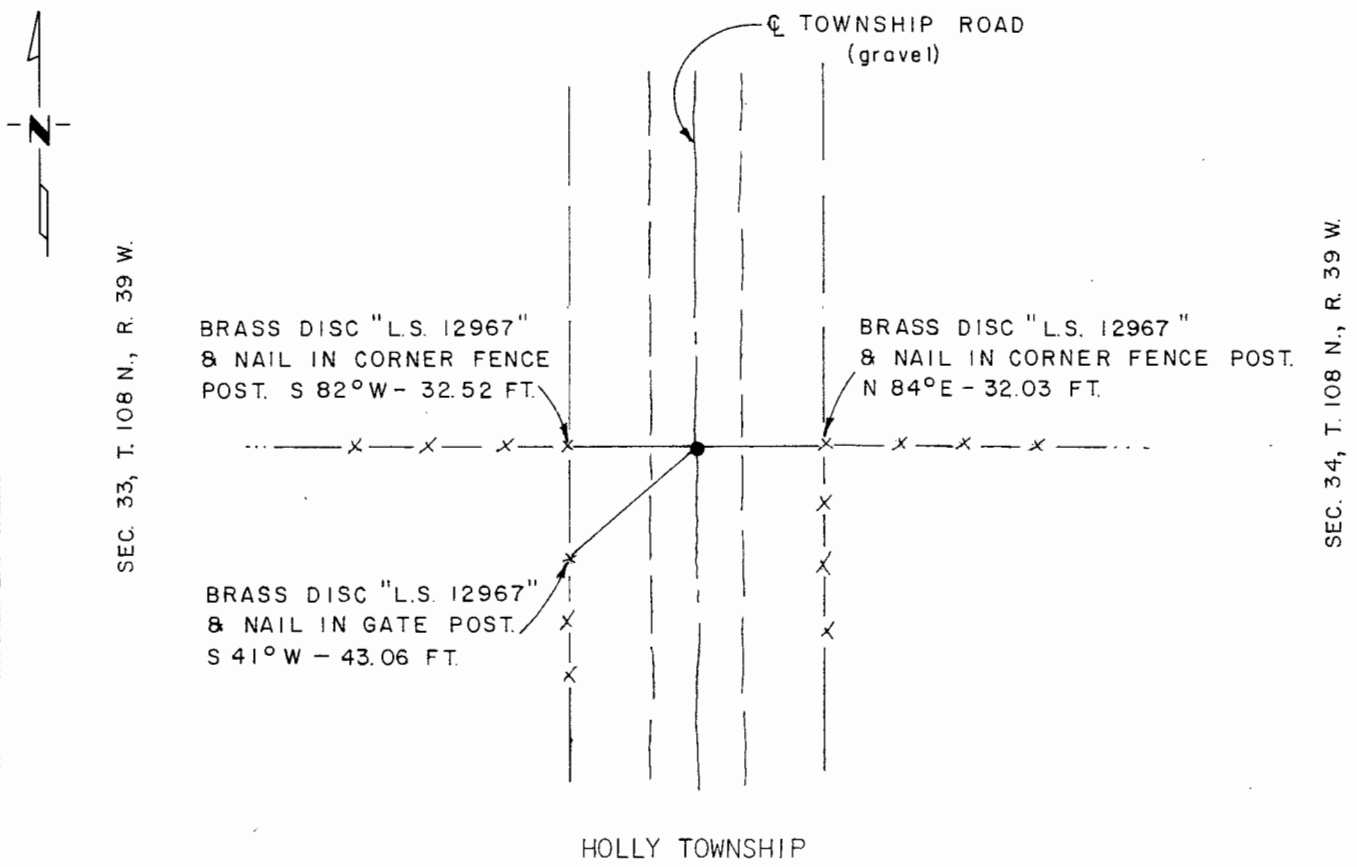
West Quarter _____ Corner of Section 34, Township 108 N., Range 39 W., 5th P.M.

STATE OF MINNESOTA, County of Murray

At the corner location shown on the sketch:

- On Oct. 9, 1980 found a field stone in line with fences east-west and township road center line north-south.
DATE
- left monument as found, lowered monument, removed monument (explain)
- On Oct. 9, 1980 placed a 1/2" iron reinforcing bar set with "L.S. 12967" cap over said stone.
DATE

SKETCH OF REFERENCE TIES



I hereby certify that this document and the data contained herein was prepared by me or under my direct supervision.

[Signature] 12/28/81
SIGNATURE DATE

Registration No. 12967

- Land Surveyor, Professional Engineer
- County Surveyor, County Engineer

OFFICE OF THE COUNTY RECORDER

County of Murray

I hereby certify that this document was filed in the Co. Recorders office at 10 A.M. on the 18th day of February A.D., 1982

County Recorder Willard W. Ohme

By _____, Deputy

DOCUMENT NO. _____